

How To Plan Routes In Less Time Than It Takes To Tie Your Shoes



Route4Me

eBook
Series

© Route4Me Inc.

+1-888-552-9045



Manual Route Planning Takes Forever

Planning routes manually can take hours.

In addition to figuring out which roads your drivers must take to reach your customers, you also need to account for traffic, weather, construction, customer availability, and other factors.



It Doesn't Need To Take That Long...

Route optimization software can take all those factors into account for you.

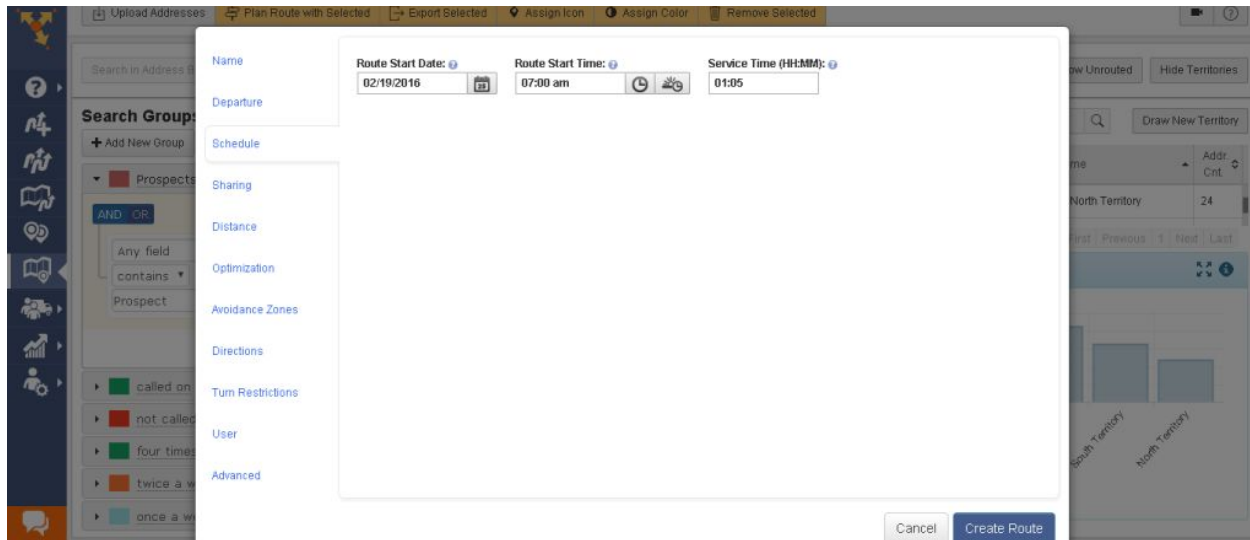
You just need to plug in the addresses of your customers and customize the settings to fit your specific situation. Then, your route will be ready in less than 30 seconds.

The following pages will show you exactly how to plan a route in Route4Me.

You're only 5 steps away from more accurate and efficient routes.

#1: Select A Start Date And Time

Enter the date and time of when you'd like your route to start.



#2: Select Your Driver

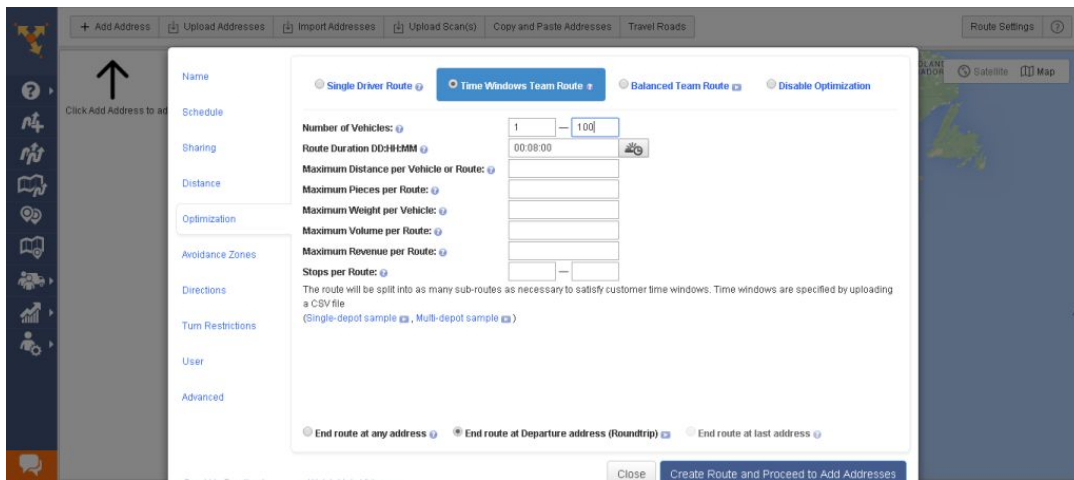
Next, you'll need to assign a driver to the route.

You can add a driver by inputting their email address, or you can select them from your Address Book. After you add a driver, any changes made to a route will be automatically shared with them.



#3: Choose The Optimization Process

Choose whether you need routes for one driver or multiple drivers. Also, choose whether your route will end where it started (roundtrip) or at the last address.



The screenshot displays the 'Route Settings' interface of a route optimization software. The 'Optimization' tab is selected, showing various configuration options:

- Route Type:** Radio buttons for 'Single Driver Route', 'Time Windows Team Route' (selected), 'Balanced Team Route', and 'Disable Optimization'.
- Number of Vehicles:** A range selector set to 1 to 100.
- Route Duration:** A time selector set to 00:08:00.
- Maximum Distance per Vehicle or Route:** An empty input field.
- Maximum Pieces per Route:** An empty input field.
- Maximum Weight per Vehicle:** An empty input field.
- Maximum Volume per Route:** An empty input field.
- Maximum Revenue per Route:** An empty input field.
- Stops per Route:** A range selector set to 1 to 10.

Below these settings, a descriptive text states: "The route will be split into as many sub-routes as necessary to satisfy customer time windows. Time windows are specified by uploading a CSV file (Single-depot sample, Multi-depot sample)".

At the bottom, three radio buttons determine the route's end point: 'End route at any address', 'End route at Departure address (Roundtrip)' (selected), and 'End route at last address'.

Buttons for 'Close' and 'Create Route and Proceed to Add Addresses' are visible at the bottom right.

#4: Select Your Stops

There are several ways to add stops to your route. You can type in the addresses manually, use a map to select the exact locations you want to use, or upload a spreadsheet containing your customer data (we recommend the spreadsheet option).

The screenshot displays a route planning software interface. At the top, there are navigation buttons: Upload Addresses, Plan Route with Selected, Export Selected, Assign Icon, Assign Color, and Remove Selected. Below this is a search bar for the Address Book and a status indicator showing 98 Addresses in Selected Region. The interface is divided into three main sections:

- Search Groups:** A panel on the left for defining search criteria. It includes a "Check All" button and a "Prospects Only" filter. The search rules are defined using "AND/OR" logic. The first rule is "Any field contains Prospect". Below this, there are several predefined filters: "called on", "not called on", "four times a week", "twice a week", and "once a week".
- Map:** A central map view showing a red-shaded region in Boulder, Colorado. The map is overlaid with a grid and numbered blue location markers (1 through 16) indicating selected stops. The map settings include "Map Settings", "Satellite", and "Map" options.
- Territory Counts:** A panel on the right showing a table of territories and a bar chart. The table lists "North Territory" with 24 prospects. The bar chart shows the distribution of prospects across three territories: South Territory 3 (40), South Territory (35), and North Territory (25).

#5: Click “Create Route”

Now you're good to go! Just hit the “Create Route” button, and your route will ready in less time than it takes to tie your shoes.

By adopting route planning software, you'll be able to save time, save gas, and make more money.



Start Your Free Trial Today

See For Yourself What Route4Me Can Do For Your Bottom Line
No Credit Card Is Needed For This Free 7-Day Trial

[Click Here To Begin Your Free Trial](#)

Call Us At +1-855-823-2598

Our Small Business Routing Experts
Will Get You Set Up Right Away