

The Definitive Guide to Route Planning



Route4Me

eBook
Series

© Route4Me Inc.



+1-888-552-9045





The Origins Of Route Planning

In 1959, National Medal of Science-winning mathematician George Dantzig and another researcher, John Ramser, published ["The Truck Dispatching Problem"](#). It included the very first algorithm for optimal route planning.

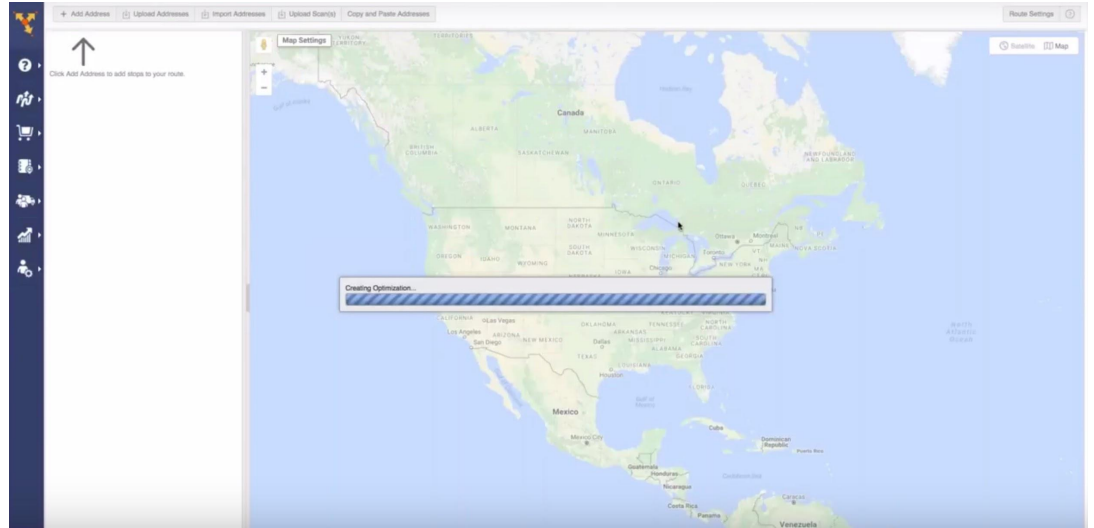
Basically, route optimization is the process of using complicated math stuff to find the most efficient way to visit a given set of addresses. This has practical applications for courier companies, delivery services, and every other business that sends employees out to meet with customers.

From Start To Finish, Route Planning With Route4Me Is Easy!

#1: Upload the addresses of your customers

#2: If an address has been flagged for review, confirm it's correct or fix the mistake

#3: That's it! Your optimized route will be ready in 30 seconds or less





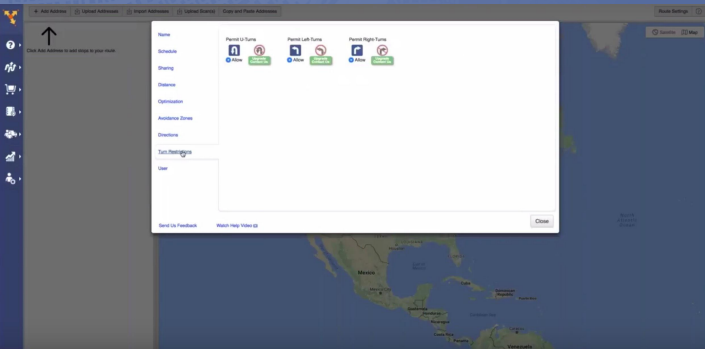
Turn Restrictions

If UPS Does It, Maybe You Should Follow Suit

UPS saves [hundred of millions of dollars](#) every year by avoiding left turns.

Whenever your driver goes to take a left turn at an intersection, there's no telling how long they'll need to wait. Unless they have an arrow, they won't have the right of way. All that idling is a huge waste of time and gas.

You'll be better off avoiding left turns altogether. Route4Me allows you to take the left turns (and U-turns) out of your routes with just the press of a button.



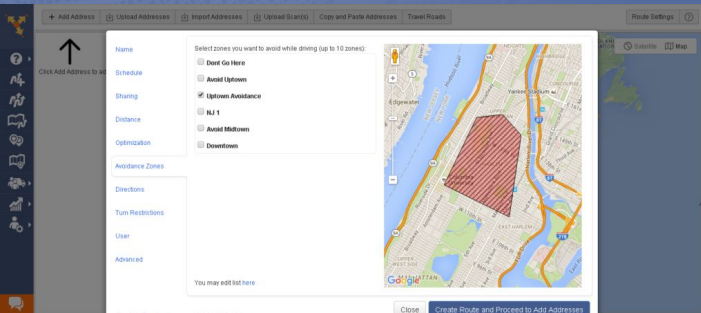


Avoidance Zones

Go Where You Want To Go, Avoid What You Want To Avoid

There are probably some places in your service area that you want to avoid.

Maybe there's a tough neighborhood where drivers often get carjacked, or a particularly busy intersection that always seems to slow your drivers down.



With Route4Me, you can draw avoidance zones over a real-world map. After you do that, our software will design routes for you that are efficient as possible while avoiding those areas.

A faint, light blue map of New Orleans, Louisiana, serves as the background for the slide. The map shows the Mississippi River, the city grid, and various landmarks such as the Metairie Cemetery, New Orleans Country Club, and Audubon Park. The text "eSignature Software" is overlaid on the right side of the map in a large, white, sans-serif font.

eSignature Software



Save The Trees (And A Lot Of Time)

Paper slips are easy to lose. What if a customer claims that a delivery was never made, your driver says they did make the delivery, and then it turns out that you lost the confirmation slip? You could either believe the customer and alienate your driver, or believe your driver and alienate the customer. There is no good option.

Customers can sign for deliveries directly on your driver's mobile device when you have eSignature software. Whenever there's a dispute, you'll know exactly what went down.



GPS Tracking



Keep An Eye On Your Drivers

Another valuable feature is GPS tracking.

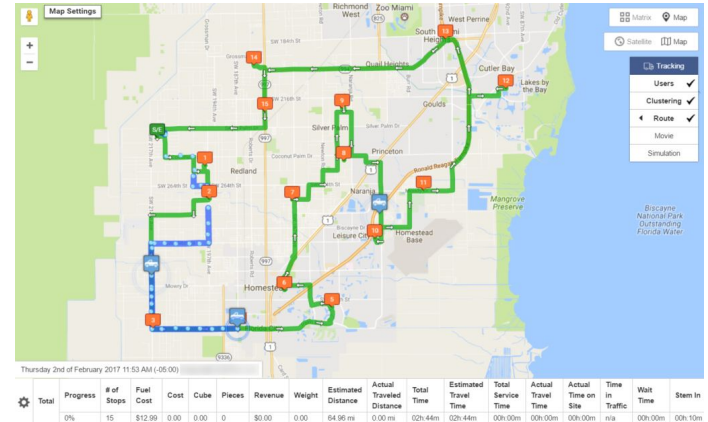
Workers of all kinds tend to slack off a bit when they're unsupervised, and drivers are almost always unsupervised. They might be stopping for snacks or even running personal errands while they're on the clock. You can't see them, so how do you know?

GPS tracking is how. With GPS tracking, you can see where your drivers are in real-time. Whenever you want, you can check in on a driver and make sure they're sticking to their route and staying on schedule.

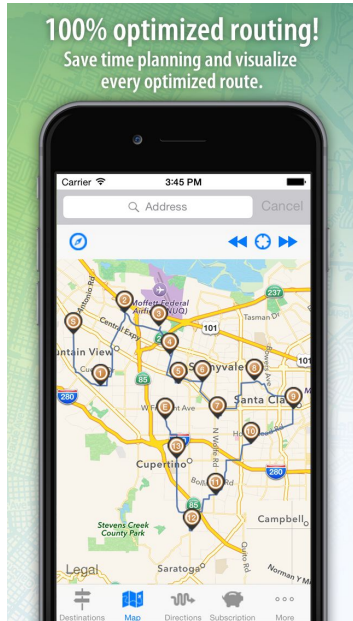
See How Fast Your Drivers Are Going, Too

GPS tracking also shows you how fast your drivers are going.

Speeding is a waste of gas, and it puts your drivers at greater risk of getting into an accident. GPS tracking allows you to catch speeding drivers in the act, so you can get them on the phone and tell them to cut it out right away.



Save Time, Save Gas, And Make More Money



Overall, route optimization software makes your business more efficient. Your drivers will get to your customers on time more often, and they'll use less gas, too.

Sound too good to be true? Why don't you try it out for free to see for yourself.



A faint, light-colored map of New Orleans is visible in the background, showing streets, parks, and landmarks like the Mississippi River and the French Quarter.

Start Your Free Trial Today

See For Yourself What Route4Me Can Do For Your Bottom Line
No Credit Card Is Needed For This Free 7-Day Trial

[Click Here To Begin Your Free Trial](#)

Call Us At +1-855-823-2598

Our Small Business Routing Experts
Will Get You Set Up Right Away