

The Tools for Tomorrow's Dispatchers



Route4Me

eBook
Series

© Route4Me Inc.

+1-888-552-9045



Save Time And Money With Route Optimization Software

It takes a *long* time to plan routes using pen and paper. If you have dozens of customers and multiple drivers, it can take hours.

But why would you use pen and paper? With route optimization software, you can plan routes in less than 30 seconds.

All you need to do is plug in the addresses of your customers, and then the software takes care of the rest.

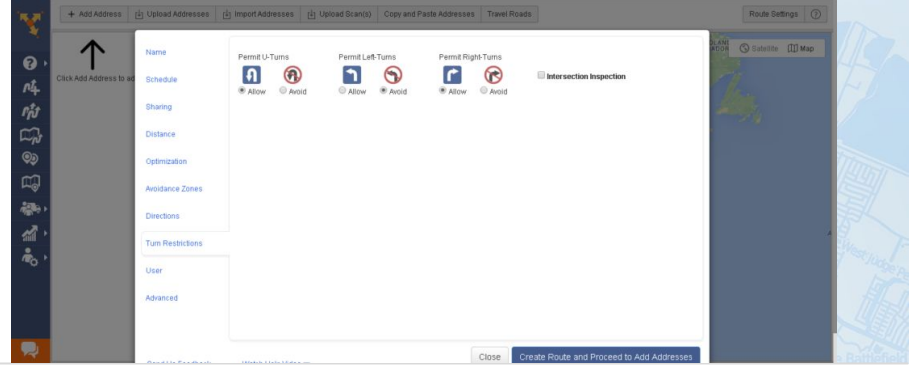
Just imagine what you could do with all that extra time...

From this...

To this...



Turn Restrictions



Did you know that UPS saves hundreds of millions of dollars every year by simply avoiding left turns?

It's true. You could also save money by directing your drivers to avoid left turns. Think about it: when your driver goes to take a left turn, they usually don't have the right of way. Your driver has to wait for traffic to clear before they can take the turn, and there's no telling how long that could take. All that idling eats up a lot of gas.

You can use final mile delivery software to take all the left turns out of your routes. Your drivers will be able to avoid many delays that way.

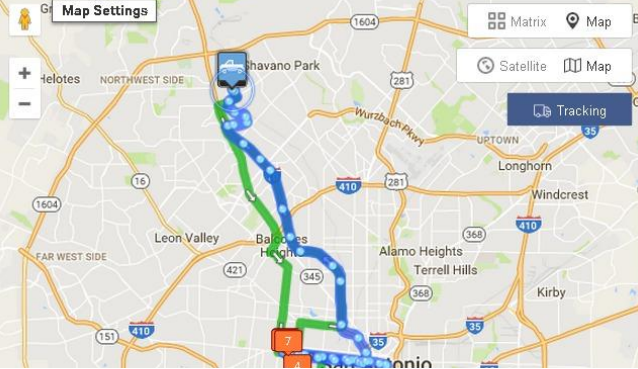
Sunset/Sunrise Restrictions



Route planning is complicated. There's more to it than just figuring out which roads your drivers need to take to get to your customers.

For example, you need to consider the sun when you plan routes. Sending a driver east during sunrise or west during sunset can slow them down or even get them into an accident, as they'll be driving with the sun in their eyes.

It's hard to adjust your routes to the sun when you plan them with pen and paper. But when you use software, all you need to do is press a button.



GPS Tracking

Your drivers are unsupervised. They might be stopping for snacks or running personal errands while they're on the clock. You can't physically see them, so how do you know?

Payroll is one of your biggest expenses, if not your absolute biggest expense, so this kind of time-wasting is unacceptable.

That's why you need to make sure the route planner you invest in has GPS tracking.

With GPS tracking, it doesn't matter how far away your drivers are. You'll always know exactly what they're doing. If a driver's falling behind schedule or straying from their route, you'll know about it immediately.

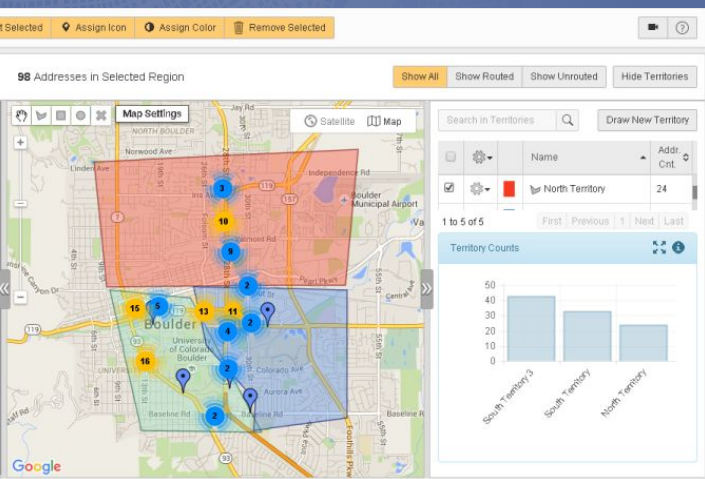
Territory Mapping

Sending your drivers back and forth across your entire service area is a huge waste of time and money.

Instead, you should break your service area up into different territories and assign a driver to each territory.

Route optimization software allows you to do exactly that. You can draw your territories right on top of a real-world map. It's easy!

Your drivers will be much more productive when their stops are closer together.



Route Optimization Software Sets Your Dispatchers Up For Success

- Optimize routes quickly and accurately
- Set restrictions to make drivers safer and more productive
- See what your drivers are doing in real-time



Start Your Free Trial Today

See For Yourself What Route4Me Can Do For Your Bottom Line
No Credit Card Is Needed For This Free 7-Day Trial

[Click Here To Begin Your Free Trial](#)

Call Us At +1-855-823-2598

Our Small Business Routing Experts
Will Get You Set Up Right Away