

My Drivers Are Having Issues with Gridlocked Areas in the Downtown Core, They Can't Maneuver Their Vans in Those Conditions.



Route4Me

eBook
Series

© Route4Me Inc.

+1-888-552-9045



The Thing About Traffic...

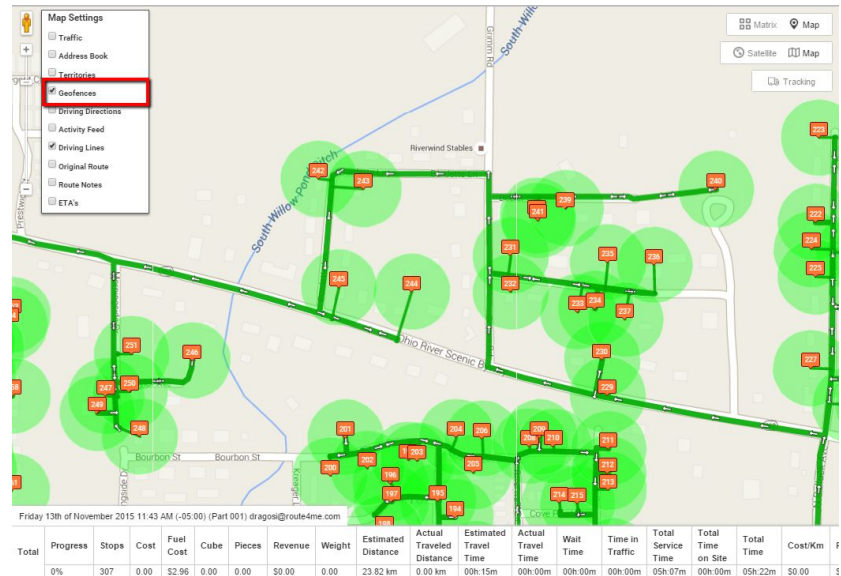
If you need to send your employees out to meet with customers on a regular basis, then you're already familiar with how traffic can affect your business. It is that unpredictable factor that messes up business timelines and schedules.



Gridlock Is The Problem

Time is money. The longer it takes for your employees to reach your customers, the less value you get out of your payroll dollars.

This is an especially big problem in urban areas, where traffic during rush hour can bring your drivers to a complete halt.





Route Optimization Software Is The Solution

When you plan routes with pen and paper, it's difficult to predict traffic. There's a decent chance you'll accidentally send your drivers directly into a jam.

That will delay your drivers, which is sure to upset your customers. They might even leave you for one of your competitors. Worse yet, they might go online and leave you a negative review. That'll make it harder for you to attract new customers.

Route Optimization Software Is The Solution



But what if we tell you that there is a way to solve this problem?

A cloud-based route planner like Route4Me automatically updates to reflect real-time traffic conditions, so your drivers will be able to avoid traffic and keep your customers happy.



Using A Route Planner Saves Time And Money



What's Up With Left Turns?

Traffic isn't the only thing that can slow your drivers down.

Ever notice how when you need to take a left turn at an intersection, sometimes it seems to take forever?

Left turns are unpredictable. Unless you have an arrow, you don't have the right of way, so you need to wait for traffic to clear before you can take the turn. In addition to wasting time, all that waiting eats up a lot of gas.

Left Turns: Let's Talk About Facts

UPS saves [10 million gallons of gas](#) every year by avoiding left turns. If one of the most successful delivery companies in the world avoids left turns, maybe you should, too.

Also, according to *The Atlantic*, [60% of accidents](#) at intersections with traffic signals are caused by drivers taking left turns. Only 4% of accidents are caused by drivers taking right turns. If you want to keep your drivers safe, don't make them take left turns.

How About U-Turns?

U-turns should also be avoided. Like left turns, they're unpredictable. You don't have the right of way, so your drivers have to wait for traffic to clear before they can go. You'll save a lot of time and gas if you skip U-turns altogether.



You Should Avoid U-Turns As Well

When you plan routes manually, trying to figure out how to visit all your customers while avoiding left turns and U-turns would be very confusing. With Route4Me, you can take all the left turns and U-turns out of your routes with just the press of a button.



Customize Route4Me To Meet Your Specific Needs

Route Planner Options

Route4Me is easy to use. Just plug in the addresses you need to visit and the number of drivers you have, and our software will generate the most efficient route or set of routes for visiting those addresses in 30 seconds or less.

The screenshot displays the Route4Me settings interface. On the left, under 'Optimize Driving Directions for:', there are three options: 'Distance' (selected with a checkmark), 'Time', and 'Time with Traffic'. On the right, under 'Avoid:', there are four options: 'Highways' (checked with a checkmark), 'Minimize Highways', 'Tolls', and 'Minimize Tolls'. In the center, there is a panel titled 'E-Mail:' with three toggle switches: 'Disable Optimization' (checked, indicated by a red arrow), 'Disable Map Touch Address' (checked), and 'Big City Optimization' (unchecked).

Big City Optimization

You can customize Route4Me to account for the situations drivers often encounter while traveling in urban areas. Our “Big City Optimization” feature allows you to create the best possible routes for the grid road plans used in most cities.

You can also set up Route4Me so that your routes avoid tolls and highways.



A faint, light-colored map of New Orleans is visible in the background, showing streets, parks, and landmarks like the Metairie Cemetery and New Orleans Country Club.

Start Your Free Trial Today

See for yourself what Route4Me can do for your bottom line

[Click Here To Begin Your Free Trial](#)

Call Us: +1-855-823-2598

And have our small business routing experts
set up routes for your business

No Credit Card Needed for this Free 7-Day Trial