

# I Have 5 Drivers and They All Cover Their Own Assigned Areas. How Can I Plan Their Stops Without Going Outside of Their Territory?



Route4Me

eBook  
*Series*

# Planning Your Route with Route4Me Vs. Free Routing Apps

For businesses that require the services of drivers and fleets of vehicles, route planning programs and GPS tracking devices are essential. This is why Google Maps was such a fad back then. Aside from being free, it is a great navigation tool, especially for those who are not familiar in an area. The thing with many free tools these days is they offer limited access to route customization and optimization, driver navigation, and map settings. If you need a route planner for multiple stops, Route4Me™ would be perfect for you. We give access to a variety of customization options for different user types.



# Manage Your Time and Costs More Effectively

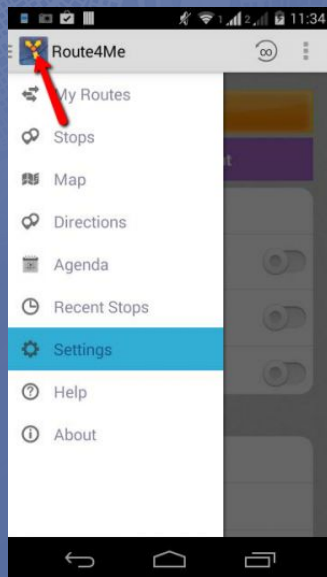
Whenever one of your drivers get assigned to a larger area, it would not be efficient to have the same driver travel to another route. That's why smart route planning is key to efficient and cost-effective deliveries. Here, we can help you save more time and gas through managing your route territories and zones.

We can also show you how one driver can maximize a single route that he is assigned to. Your drivers can navigate within a single area and pass through different stops within your address book. Read on to learn more how you can draw zones and edit our in-app map.



# **How Route4Me Helps You Manage Routes, Monitor Multiple Drivers, and More**

# Route Planning



Before we jump into Route4Me's handy features, we need to understand how route planning is done. Here, we'll discuss a summary of how planning is done. If you need full [Video Tutorials on Route Planning](#), you may check the videos provided in the link. Later on, we'll show you how you can set your route planner for multiple stops.

Let's say you have uploaded the addresses you need to plan the route for in the system. You can take control of the way the routes are optimized through accessing the advanced features. You can manage this on the **Settings** button.



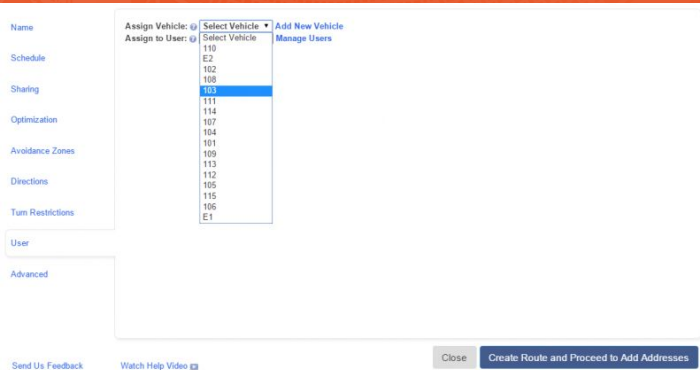
From here, you can access several routing optimization options, routing types, driving directions, and even set the settings to avoiding tolls and highways.

In the Routing Optimization Options menu, you can enable **Big City Optimization** feature by sliding the switch next to it. This provides better optimization for your routes for grid distances, specific to big cities.



# Assigning a Driver to a Route

When assigning a driver and a vehicle to a route, we have several route dispatching options. Each user type that you assign to a specific route will be able to access, view, and edit that route. The user can modify this route through logging into the Route4Me website or on the mobile device app.



The screenshot shows the 'Assign Vehicle' dialog box in the Route4Me interface. The dialog has a sidebar on the left with navigation links: Name, Schedule, Sharing, Optimization, Avoidance Zones, Directions, Turn Restrictions, User, and Advanced. The main content area is titled 'Assign Vehicle: @' and contains a dropdown menu labeled 'Select Vehicle' with a list of vehicle IDs: 110, E2, 102, 108, 103, 111, 114, 107, 104, 101, 109, 113, 112, 105, 115, 106, and E1. The vehicle ID '103' is currently selected and highlighted in blue. To the right of the dropdown menu, there are two links: 'Add New Vehicle' and 'Manage Users'. At the bottom of the dialog, there are three buttons: 'Close', 'Create Route and Proceed to Add Addresses', and 'Send Us Feedback'. A small 'Watch Help Video' link is also visible in the bottom left corner.

Keep in mind that assigning a route is different from **Sharing a Route**. The latter only officially sends out an email about the route previously created. The email contains a simplified manifest, the route details, the .CSV file, and a unique link to the route in the Route4Me platform.

In the process of setting the route parameters, you can also assign a user to the route. This is highly recommended when planning a route for a single driver or multiple routes for the same driver.

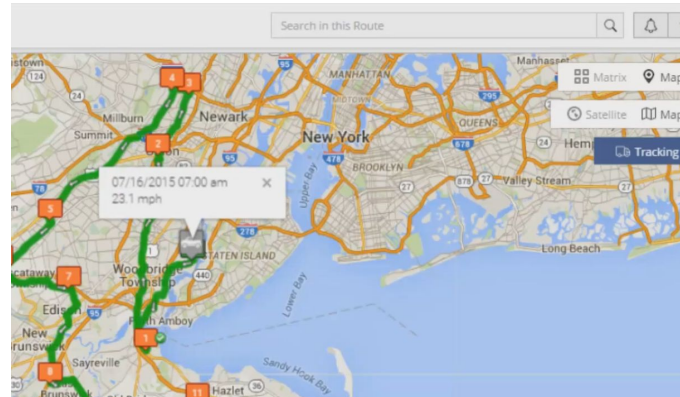
Under the **User** tab, you can assign a vehicle and user responsible for your planned route. If your vehicle and driver have

already been set up in the system, all you need to do is select them from the corresponding drop-down list.





When adding a new vehicle to assign to this route, click **Add New Vehicle**, then add your vehicle as indicated in our article on "Managing Your Vehicles". If you need to add a new user, click **Manage Users**, then add the user following the steps outlined in our article on "Managing Users, Drivers, and Team Members". Visit [Assigning a User and a Vehicle to a Route](#) for more information.



# Interactive Map

One of the best features of Route4Me is our interactive map. You can set it to **Map View** or **Matrix View**. For Map View, you still have the option to view it as Satellite or Map. The Map view will show you the details found in a specific area. Satellite view on the other hand gives you a glimpse of the aerial images of the places.



Our interactive map will show the very places found in your address book or spreadsheet. This feature makes our route planner for multiple stops more accurate. Whenever you click certain residences or locations, you also have the option to view driving directions on the right side of the map.

**Start Depot**  
20 Mayberry Dr, Westborough, MA 01581, USA

**1) Customer 2**  
12 Beach St, Westborough, MA 01581, USA

**2) Customer 1**  
12 Beach St, Westborough, MA 01581, USA

**3) Customer 3**  
20 Mayberry Dr, Westborough, MA 01581, USA

**4) Customer 5**  
5 Allen St, Hopkinton, MA 01748, USA

**5) Customer 6**  
23 Kathryn Ln, Holliston, MA 01746, USA

**6) Customer 7**  
119 Main St #102, Ashland, MA 01721, USA

**7) Customer 8**  
5 Macdonald Ln, Framingham, MA 01702, USA

**8) Customer 72**  
19 Brook Meadow Cir, Framingham, MA 01701, USA

**9) Customer 71**  
142 Maynard Rd, Framingham, MA 01701, USA

**Address**  
Address: 23 Kathryn Ln, Holliston, MA 01746, USA  
Alias: Customer 6  
Lat, Lng: 42.2089604, -71.4541926  
Address Stop Type: Delivery

**Address Visit Details**  
Marked as Visited: ☐  
Marked as Departed: ☐  
Detected as Visited: ☐  
Detected as Departed: ☐

**Order**  
Order No:   
Order Cost: 0  
Cube: 0  
Invoice No:   
Pieces: 0  
Reference No:   
Revenue: 0  
Weight: 0

**Map Settings**  
Map:   
Satellite:   
Map:   
Tracking:   
Map Settings

**Friday Route Planner**  
Friday Route Planner  
Friday Route Planner

	Total	Progress	# of Stops	Fuel Cost	Cost	Estimated Distance	Actual Traveled Distance	Cost/Mile	Profit/Mile	SPORH	TPORH
		0%	85	\$17.41	0.00	87.07 mi	0.00 mi	\$0.00	\$0.00	15.57	12.67



# Customizing Your Map

In **Map Settings**, you can add layers to your map in order to include more information about your route for your reference or the driver's.

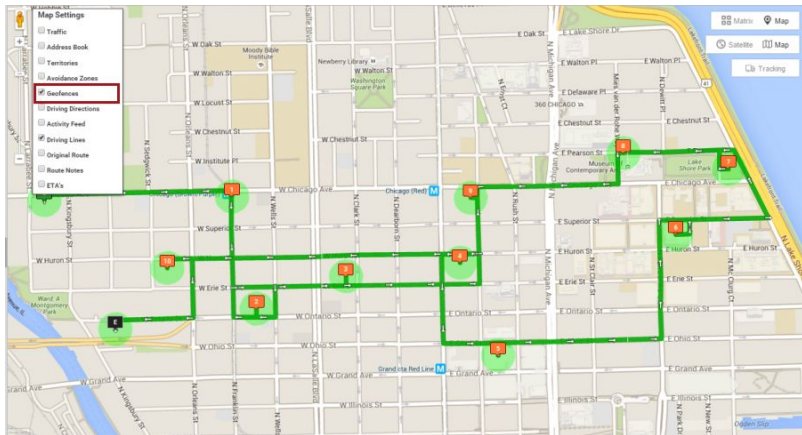
By default, the driving lines are checked and are advisable to be kept for visual representation of turn-by-turn directions of the route.

You can also check the **Address Book** option in your map to bring up all the addresses relevant to the route map.





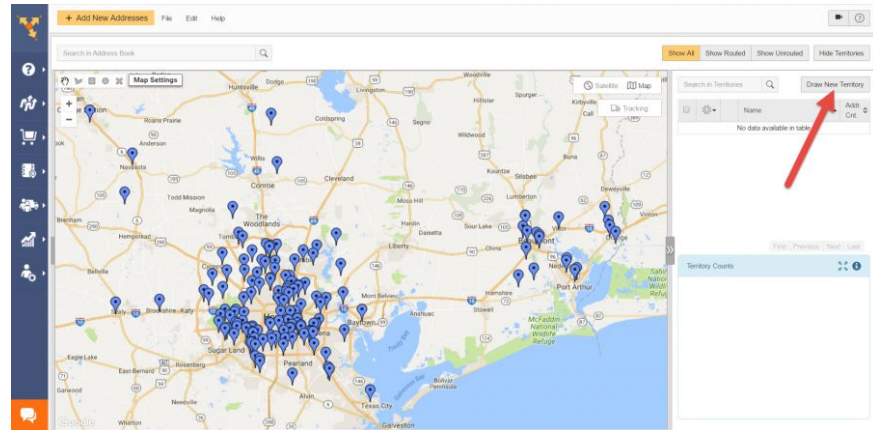
From here, you can view which contacts are located closely to each other. If you check the **Clustering** box, you can display those addresses at a single cluster rather than individual pins. You can also view the **Defined Territories**, **Avoidance Zone**, and **Geofences** boxes and each will bring up the corresponding information.



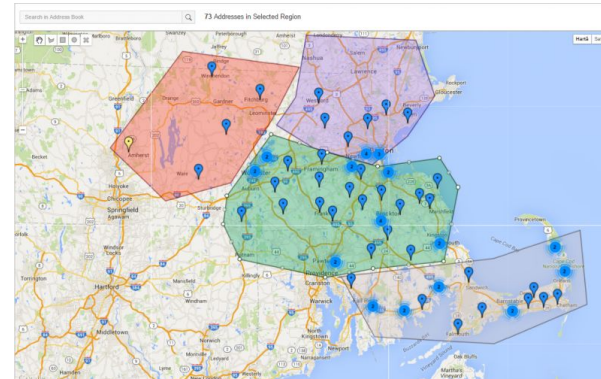


# Territory Marking

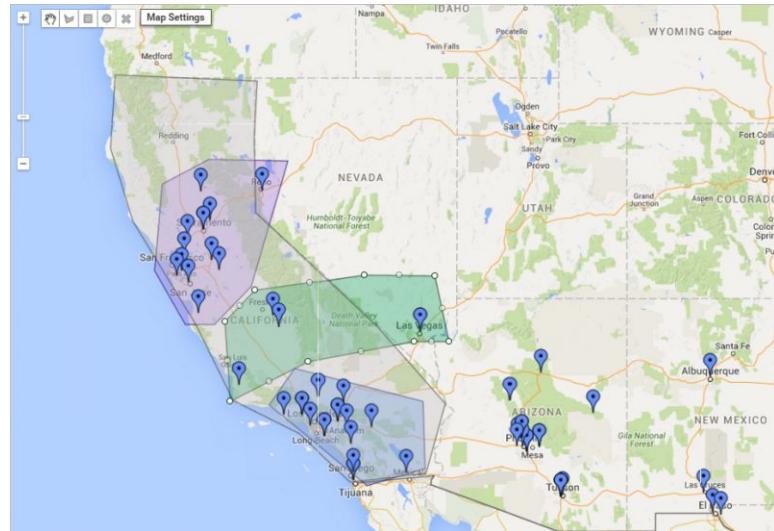
When setting up and managing territories, the Address Book Map will help you balance these within user defined regions. Territory based optimization is useful if you want to visually determine area proximity to regional office / warehouse locations and then to easily assign customers to personnel who are in the vicinity.



Territory marking makes our route planner for multiple stops more organized and accurate. Create a territory by clicking the **Draw New Territory** button on the right hand side of your Address Book Map screen. Type in a name for your territory, then select the color your territory will have on the map. Click **Add** when you're done. You can now start drawing your territory borders on the map itself.



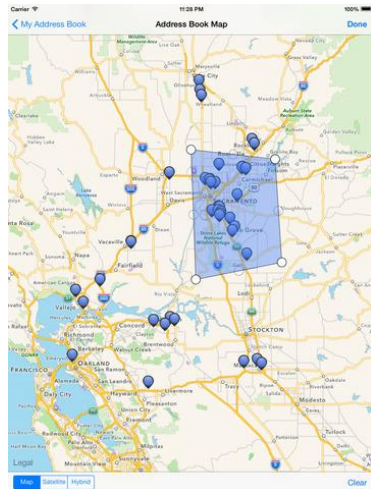
Each left click on the map determines the territory's borders, marked by straight lines. Complete the territory selection, by either double-clicking on the map or connecting the border lines back to the point where you started.



# Optimizing Your Territory

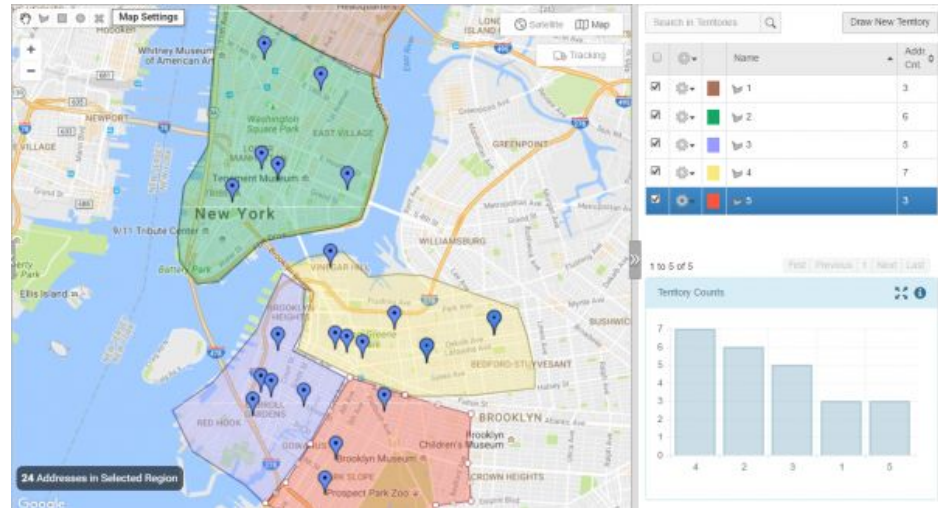
Optimizing your territories let you upload multiple driver locations and customer locations as well as automatically matching them up in terms of finding the nearest driver to each of the customers.

If you go to our [Territory Optimizer](#) app, you can download sample files for the drivers (reps) and for the customers (stores) to serve as an example in preparing and formatting your own file.





You can upload your files, configure the optimization parameters and key in the constraints and click, **Optimize Now**. Optimizing territories will help your route planner for multiple stops be more organized, accurate, and efficient.

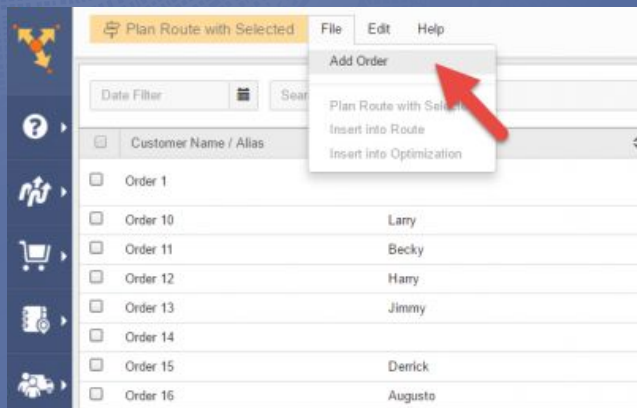




# Creating and Editing an Order

Now that we've discussed about route planning, assigning routes, and creating territories, let's talk about creating new orders.

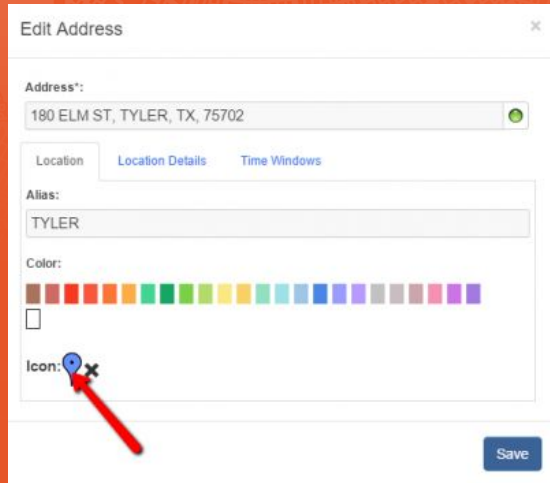
Say, you recently have new addresses to visit and new routes to plan, simply, click **File** and on the drop down menu shown, click **Add Order**.



Once the page for addresses comes up, key in the necessary details. Here, you can edit the location details and other custom data.

# Assigning Icons to Your Contacts

Did you know that you could also personalize your contacts through assigning icons or emojis? To assign an icon for a single contact, right-click on the pin, then select **Edit**. Then click on the pin icon in the **Location** section. Select one of the available icons by clicking on it, then click **Save** to close the **Edit Address** box.



You can also assign an icon for multiple contacts at the same time, simply (1) Click on one of the selection tools in the upper left-hand side corner of the map, (2) Click and drag to make a selection around the contacts, (3) Click the **Assign Color** button.

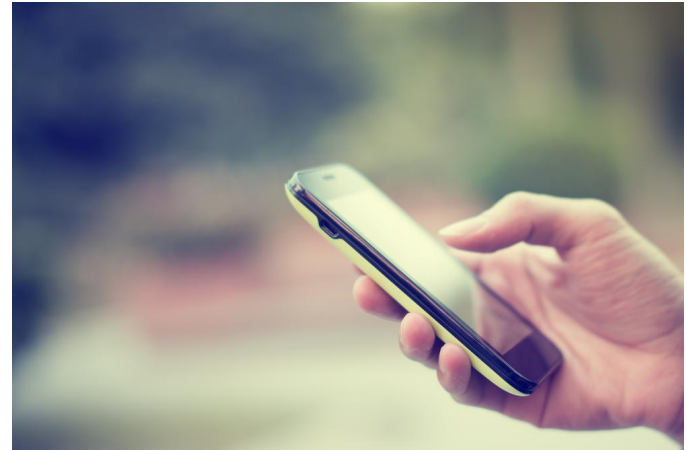
# Optimizing Routes and Monitoring Work Progress Made Easy

Route4Me makes planning and organizing routes easier. Not to mention it's an effective route planner for multiple stops as well. The more you efficiently manage your routes and multiple drivers, the more you can save on time and fuel. Route4Me can cut costs on your fuel usage by at least half. The best part is, you only get to spend less than 10 minutes per day on planning routes.



# The World's First and Fastest Dynamic Route Optimization™

We are also the World's First and Fastest Dynamic Route Optimization™. Our Dynamic Route Optimization™ Technology lets you plan new routes in seconds. You can use our program on iPhone, iPad, and Android. If you want to focus more on the integral parts of your business, let us do the route planning.



Pan Xunbin/Shutterstock.com

A faint, light-colored map of New Orleans is visible in the background, showing streets, parks, and landmarks like the Mississippi River and the French Quarter.

# Start Your Free Trial Today

See for yourself what Route4Me can do for your bottom line

[Click Here To Begin Your Free Trial](#)

**Call Us: +1-855-823-2598**

And have our small business routing experts  
set up routes for your business

*No Credit Card Needed for this Free 7-Day Trial*