

Making Sure Your Dispatching Isn't A Joke



Route4Me

eBook
series

© Route4Me Inc.



+1-888-552-9045





Dispatching Is Difficult

There's more to planning routes than just figuring out which roads your drivers need to take to get to your customers.

You also need to account for traffic, weather, construction, and other factors.

And even if you give your drivers perfect routes, how do you know they're actually following those routes?

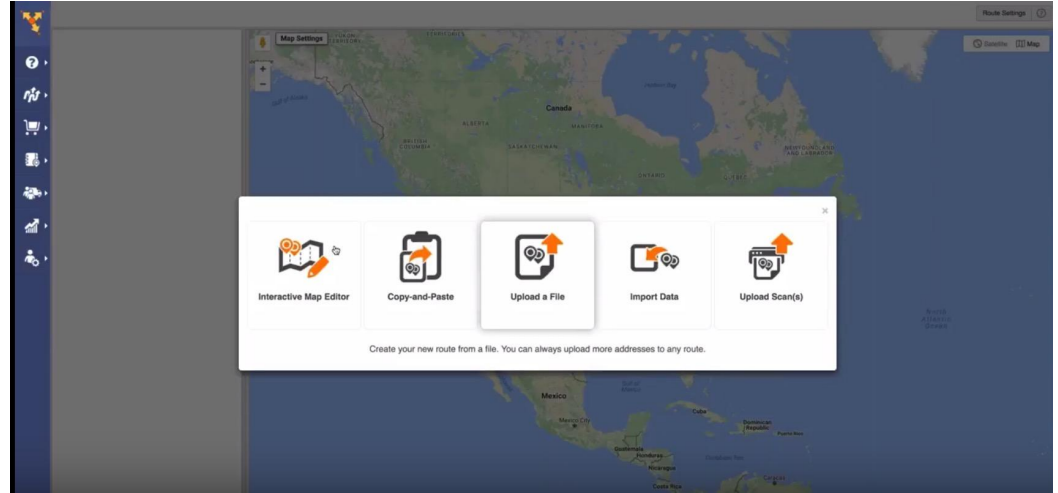
Route4Me is how. Our software will design perfect routes for you, and it helps you keep track of your drivers, too.



Planning A Route With Route4Me Is Easy As Pie

Step #1:

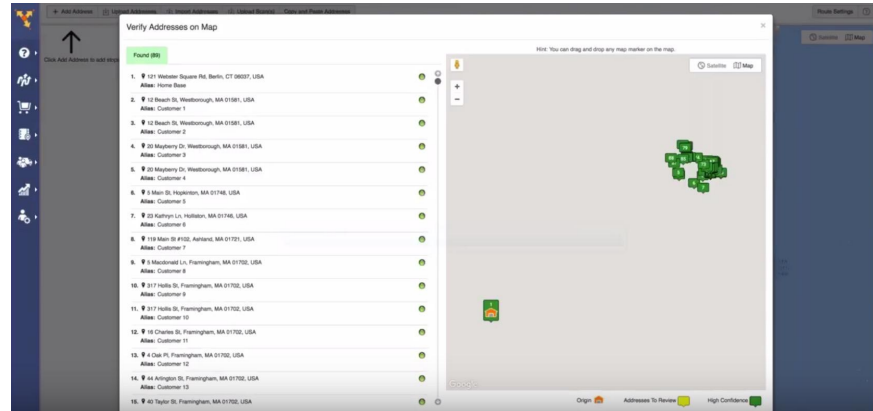
Enter Your Data



1. Select "Plan New Route"
2. Choose how you want to input your data ("Copy-and-Paste", "Upload a File", etc.)
3. Name and schedule the route
4. Click on the Optimization button and choose which form of optimization you would like
5. Set Restrictions (no left turns, no U-turns, etc.) as needed

Step #2:

Check Out Any Addresses That Have Been Flagged For Review

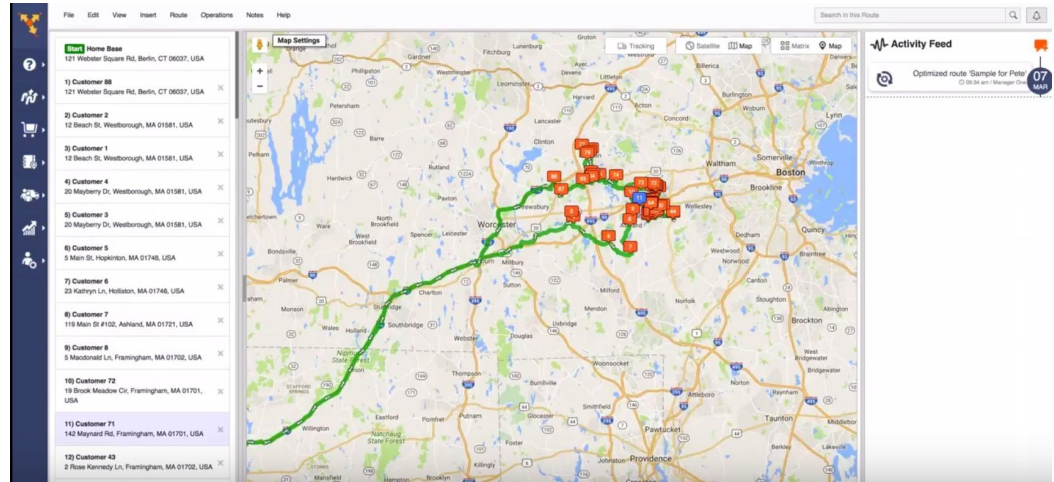


After you've uploaded your addresses, Route4Me will automatically validate the data and flag anything that looks like a data entry error (for example, all your stops are in Alabama, except for one that's in Alaska).

If any addresses have been flagged, confirm they're correct or fix them to continue.

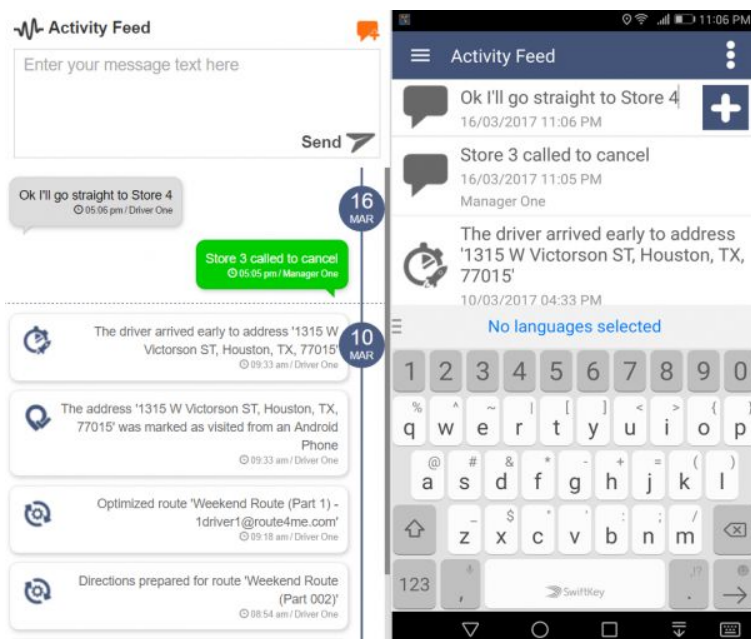
Step #3:

That's it!



Once you've entered your addresses and corrected any mistakes that were flagged for review, it only takes 30 seconds or less for Route4Me to produce a 100% accurate and optimized route for you.

Communication Is The Key To Successful Dispatching



Dispatching is dynamic. Regardless of how good the initial route is, there might be some change you need to make at the last minute. What if a customer calls in and wants you to make a delivery to a different address?

Route4Me's chat feature makes it easy to communicate with your drivers after they've left the office.

See What Your Drivers Are Doing In Real-Time



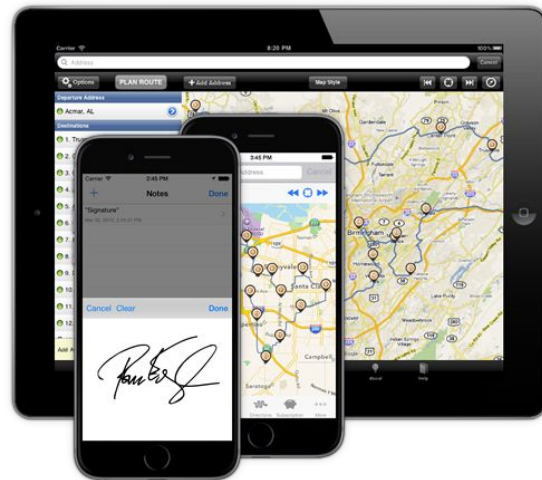
Rawpixel.com/Shutterstock.com

You can do more than just chat with your drivers on Route4Me. Our GPS tracking feature will show you where your drivers are and how fast they're going at any given time.

Route4Me Is A Dispatcher's Dream

Most workers tend to slack off a bit when they're unsupervised, and drivers are almost always unsupervised. With GPS tracking, you can make sure everyone is sticking to their routes and staying on schedule.

Overall, Route4Me's route planning and GPS tracking capabilities will allow you to save gas, save time, and make more money.



A faint, light-colored map of New Orleans is visible in the background, showing streets, parks, and landmarks like the Mississippi River and the French Quarter.

Start Your Free Trial Today

See For Yourself What Route4Me Can Do For Your Bottom Line
No Credit Card Is Needed For This Free 7-Day Trial

[Click Here To Begin Your Free Trial](#)

Call Us At +1-855-823-2598

Our Small Business Routing Experts
Will Get You Set Up Right Away