

Turning Consumer Trust Into Revenue & Profit



Route4Me

eBook Series





The Importance of Trust

Your business will only be successful if you keep your customer's trust.

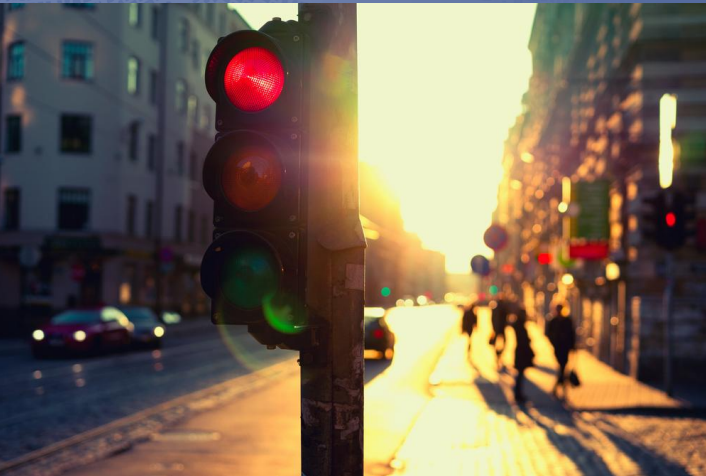
Trust is especially important if you run a courier service, sales operation, or some other business that requires you to send employees out to meet with your customers.

Customers don't want to wait around for you. They need to trust that you'll be there when you said you'd be there. If you don't show up on time consistently, your customers will eventually leave you for one of your competitors.



Route4Me Makes Your Business More Reliable

Improve Productivity



Victor Grow/Shutterstock.com

Getting to your customers on time can be difficult. There are many obstacles that might get in the way, such as traffic, construction, and bad weather.

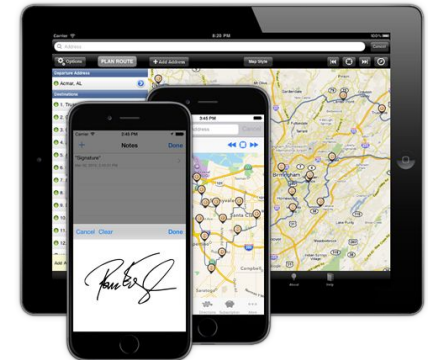
All these variables make route planning incredibly complicated. When you try to do it by yourself, you may make a mistake, which will delay your drivers and upset your customers.

But you don't need to plan routes by yourself. Route4Me does the hard work for you. It guarantees that every route you give your drivers is 100% accurate and optimized. That'll make it easier for your drivers to be punctual.

Let Your Customers Know Your Driver Is Close By

Route4Me also has a geofencing feature that allows you to draw custom borders over a real-world map.

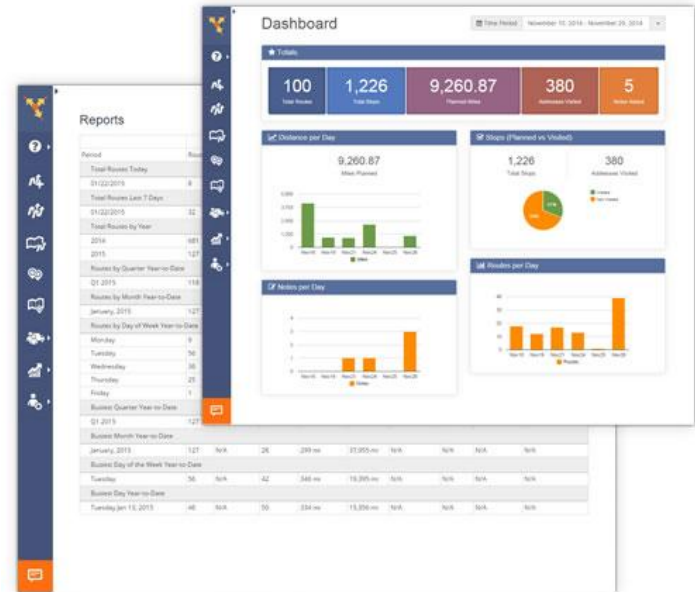
You can draw a border around a customer and set it up so that every time your driver crosses the border, the customer receives a text message. They'll appreciate the notice.



Impress Your Customers And Inspire Organic Word-Of-Mouth Marketing

Route4Me makes your drivers much more efficient. They'll show up on time, every time.

That will impress your customers. They might be so impressed that they recommend your business to their friends and family. The best way to attract new customers is to provide good service to the ones you've already got.



Start Your Free Trial Today

See for yourself what Route4Me can do for your bottom line

[Click Here To Begin Your Free Trial](#)

Call Us: +1-855-823-2598

And have our small business routing experts
set up routes for your business

No Credit Card Needed for this Free 7-Day Trial